

ASSIGNMENT 1

The elevator shown in **Figure 1** employs a platform to move objects up and down. The global objective is that when the UP button is pushed, the platform carries something to the up position, and when the DOWN button is pushed, the platform carries something to the down position. The following hardware specifications define the equipment used in the elevator:

Output element:

M1 = Motor to drive the platform up

M2 = Motor to drive the platform down

Input element:

LS1 = Normally Close (NC) limit switch to indicate UP position

LS2 = NC limit switch to indicate DOWN position

START = Normally Open (NO) push button for START

STOP = NO push button for STOP

UP = NO push button for UP command

DOWN = NO push button for DOWN command

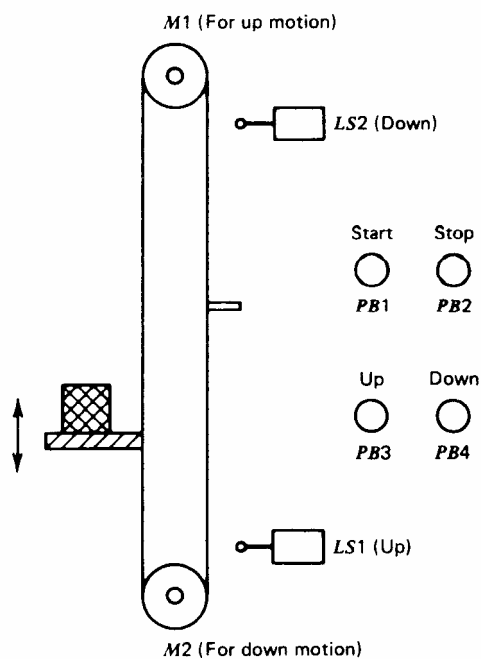
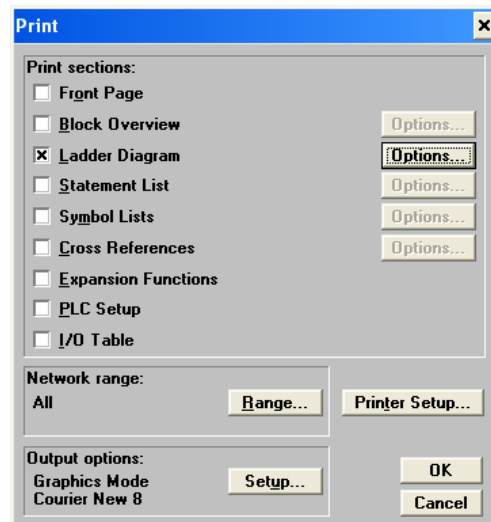


Figure 1: Elevator system for Assignment 1

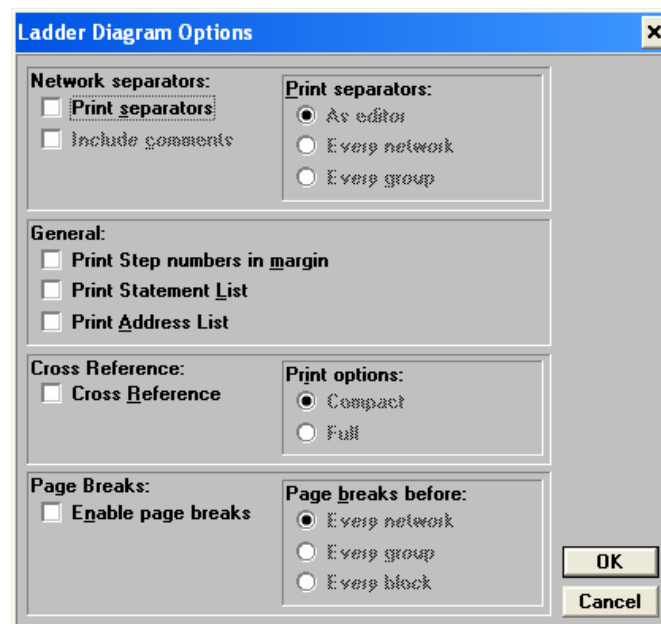
Prepare a programmable controller ladder diagram.

PRINTING GUIDE:

1. Click **Menu > Print**
2. Unchecked all check box except for **Ladder Diagram** as shown in the following figure.



3. Click **Options** button for Ladder Diagram section. Unchecked all the check box as shown in the following figure.



4. Click OK for Ladder Diagram Options and OK for Print menu. The printing result is as shown in the following figure.

